

LOCATION

Evacuation Management



Location

For a long time, online access control systems have been used to deduce the location of persons in a building. By recording the use of their access control credentials at key points in the building, the time and location of persons can be deduced. However, the data quickly becomes dated and the resolution is limited to the number of access control points used.

A common use for this data is for Roll Call in an emergency. However, the roll call report can be inaccurate with persons arriving and leaving just as the report is printed.

Bluetooth 4.1 Beacon

Bluetooth Beacons with controlled transmission power can be used to monitor occupancy on a live basis. Status rather than history is used to report the occupancy of a building.

The Bluetooth beacons can be added to existing RFID credentials being carried by staff, contractors, visitors etc.

BluFi Cloud Gateway

The anonymous beacons data is relayed to a cloud location service for processing.

The BluFi Gateway reads the Bluetooth beacon ID and uses WIFI to access an offsite cloud-based location service.

Web Dashboard

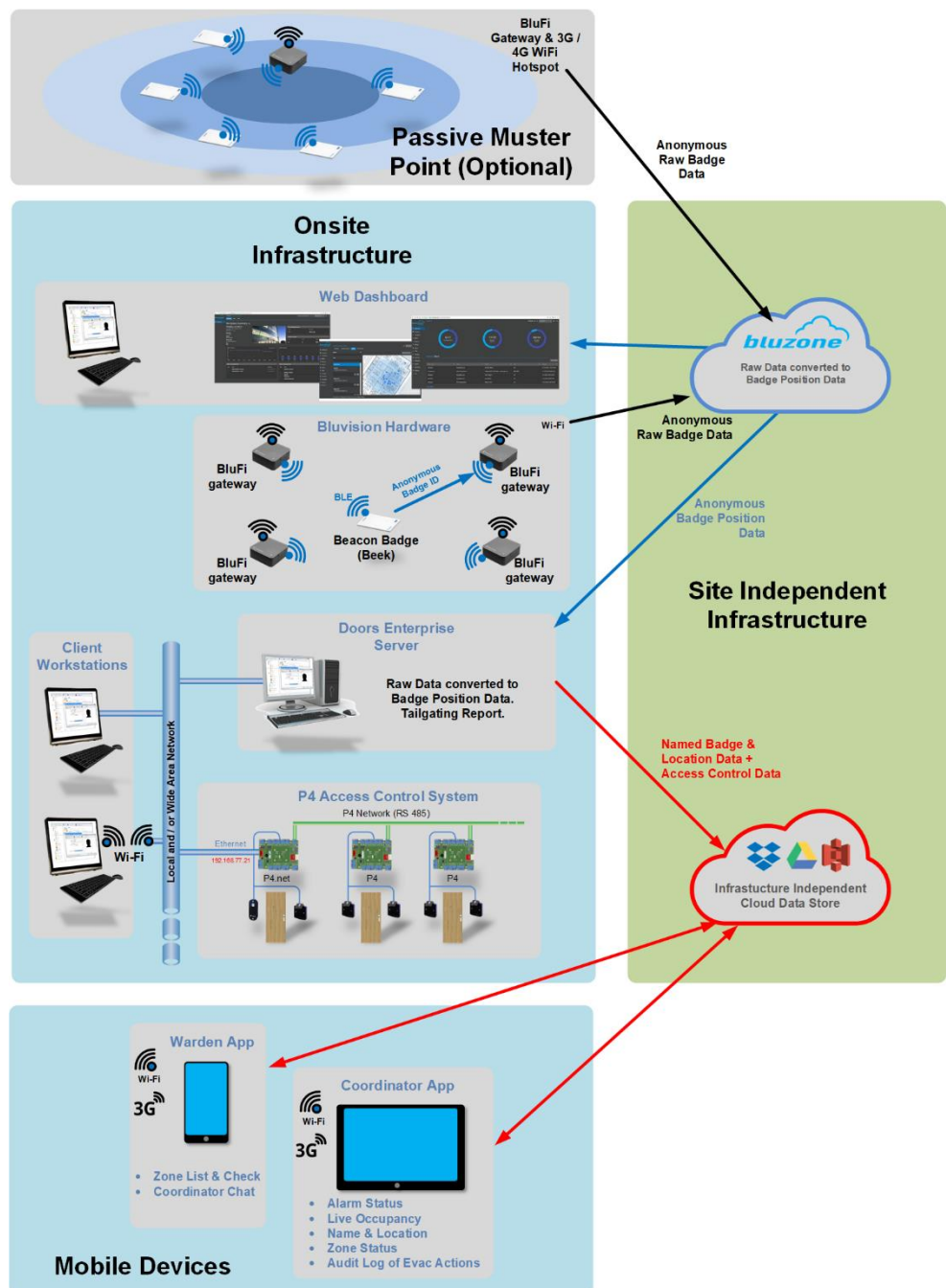
The web dashboard shows occupancy history.

- Remote management of beacons and BluFi™ Gateways
- Query telemetry data of endpoints Push configuration and firmware updates to endpoints
- Grouping and reporting functions
- Location and heat map info using standard geo-coordinates
- Interact via web console or REST API

Doors Enterprise

Doors Enterprise collects the compiled data from the cloud services and merges the user data for use by the mobile application.

System Architecture



Mobile App

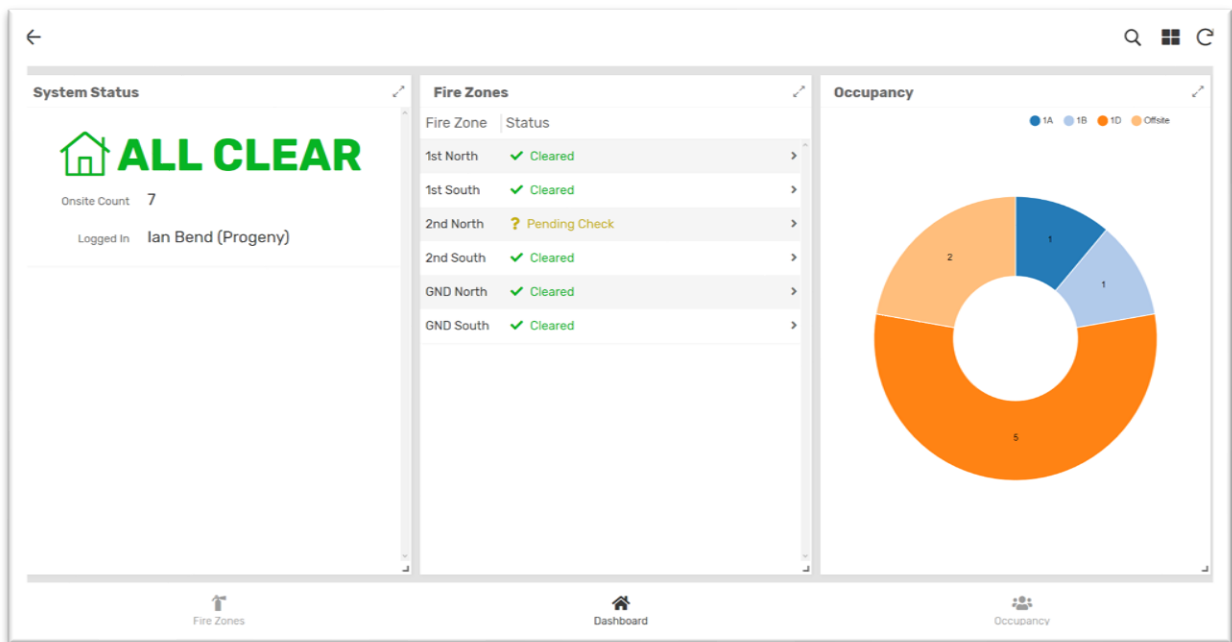
The mobile apps share the cloud data. The data available varies according to the user login settings.

Wardens: can observe and update the checked status of fire zones. This is also shared with the Coordinators.

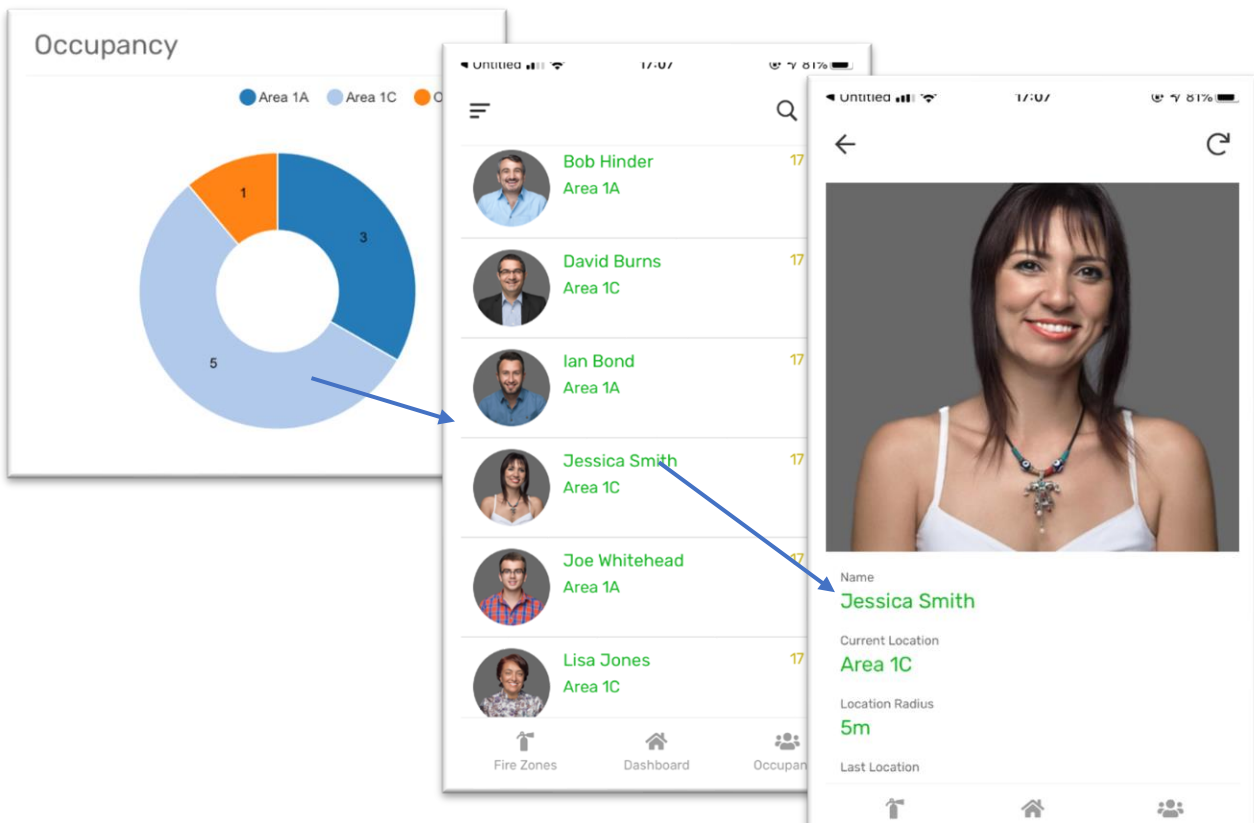
Coordinators: can see that fire zone clearance status and also the occupancy data for the building.

In the event that the someone is left behind in the building the coordinator can drill down on the user details and location. Missing person data can thus be handed to first responders.

Mobile App Dashboard




Mobile App User Detail



Fire Alarm Status ←

System Status

 **ALL CLEAR**

Onsite Count 7

Logged In Ian Bend (Progeny)

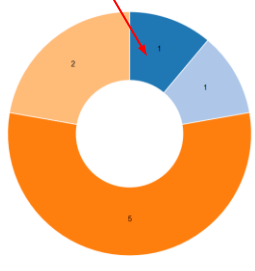
Number of Persons still onsite

Who is currently logged into the App

Warden Fire Zone Status

Fire Zone	Status
1st North	✓ Cleared
1st South	✓ Cleared
2nd North	? Pending Check
2nd South	✓ Cleared
GND North	✓ Cleared
GND South	✓ Cleared

Current Occupancy



Legend: 1A (blue), 1B (light blue), 1D (orange), Offsite (dark orange)

Fire Zones | Dashboard | Occupancy